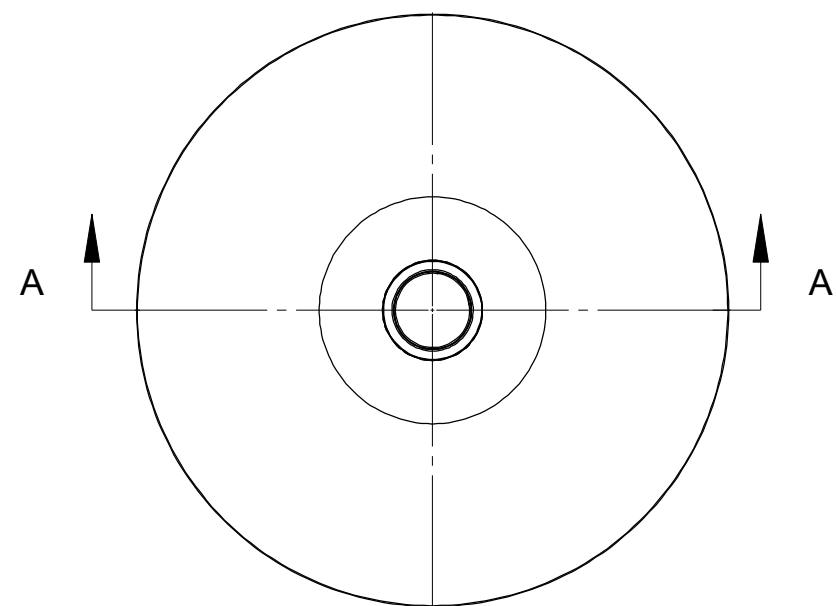
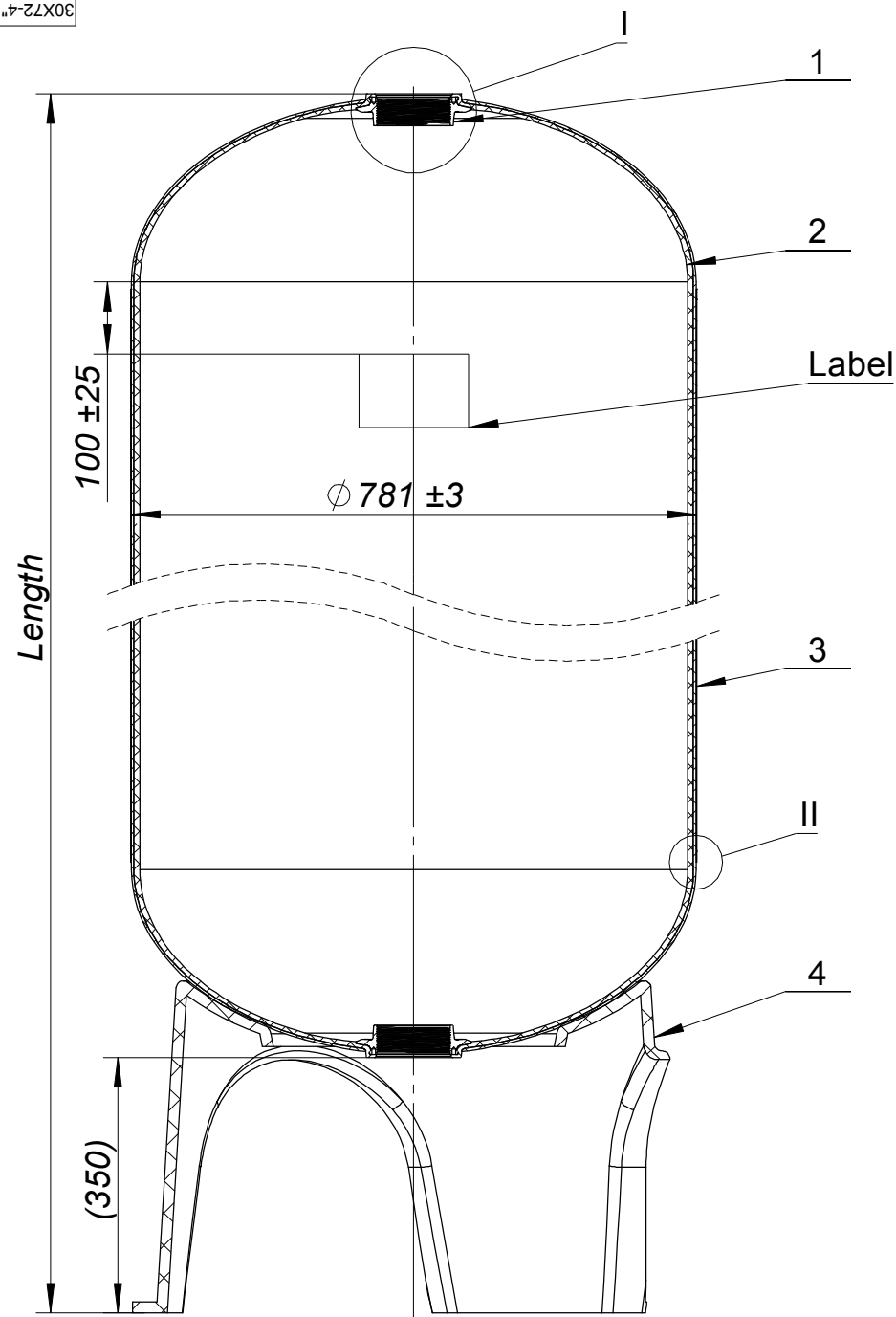
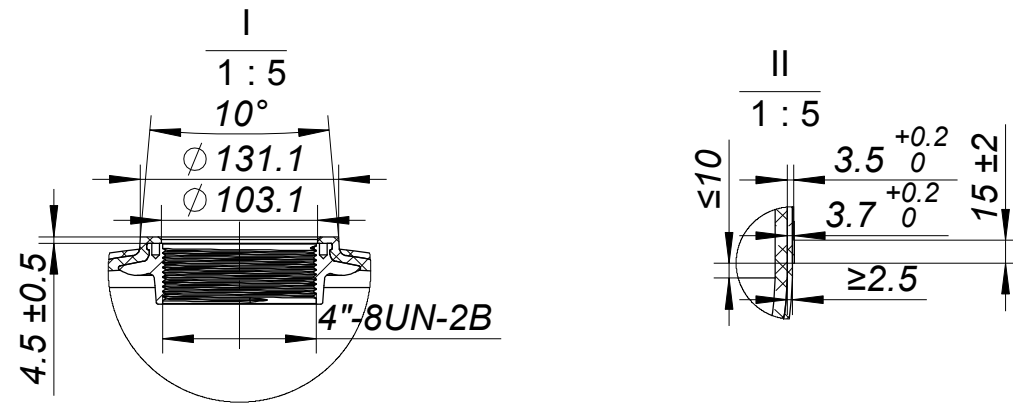


30X72-4" FRP pressure vessel
(top and bottom)




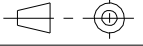
Data sheet									
MODEL	Length			Volume		Weight		Thickness of fiberglass shell(mm)	Hardness of surface (HBa)
	mm	+/-	inch	Liters	CU.Ft	KG	LBS		
30X72	2140	15	84.25	720	25.44	65	144.5	3.3+0.2/0	≥36



NOTES:

- TANK MUST MEET ALL APPLICABLE SPECIFICATIONS OF NSF/ANSI 044 STANDARD, LATEST REVISION.
- OPERATING SPECIFICATIONS:
 - A. MAXIMUM WORKING PRESSURE - 150PSI (10.5BAR)
 - B. TEMPERATURE RANGE - 34-122°F (1-50 °C)
 - C. MAXIMUM VACUUM - 5.5"Hg (140mm Hg)
 - D. MEDIA - WATER
- TEST REQUIREMENT
 - A. BURST PRESSURE TEST: 4.2MPa
 - B. CYCLIC PRESSURE TEST: 1.05MPa / 100,000 CYCLES
 - C. HYDROSTATIC PRESSURE TEST: 2.52MPa / KEEP 15MINs
- VISUAL LINER INSPECTION
 - A. NO MORE THAN 10 INTERNAL OR EXTERNAL BLEMISHES OR BURNT DEBRIS.
 - B. NO INTERNAL OR EXTERNAL BLEMISHES OR BURNT DEBRIS LARGER THAN 3 x 3mm
 - C. NO INTERNAL BLEMISHES OR BURNT DEBRIS ALLOWED
- ALL GLASS STRANDS FROM FIBERGLASS LINER TO BE BONDED AND COVERED
- LABEL'S POSITION CAN BE CHANGED WITH THE CUSTOMER'S REQUIREMENT.

Number	Description	Material	Standard of material	Quantity
4	Tripod	Fiberglass		1
3	Fiberglass shell	Fiberglass Epoxy-Resin	GB/T-18369 GB/T-13657	1
2	Liner	LLDPE	Q/SH 3045 101-2005	1
1	Threaded inserts	SS 316	GB9684	2

								 email: info@kontec.ae tel.: +971 04 258 7862 www.kontec.ae	
								30X72-4" FRP pressure vessel (top and bottom)	
MARK	PCS	REV.NO	SIGNATURE	DATE	STAGE REMARK	NUMBER /SET	SCALE		
DESIGNER		STANDARD					1:10	/	
INSPECTION		AUTHORIZATION			PROJECTION			SOURCING FROM:	
TECHNOLOGIST					TOTAL PAGES: PAGE NO.			30X72-4" FRP pressure vessel (top and bottom)	